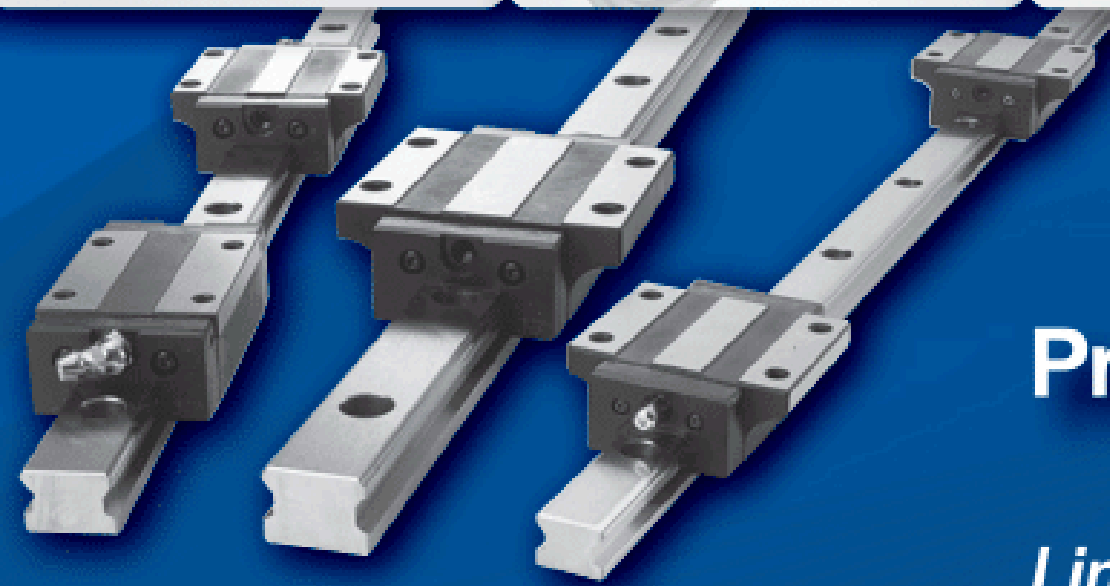
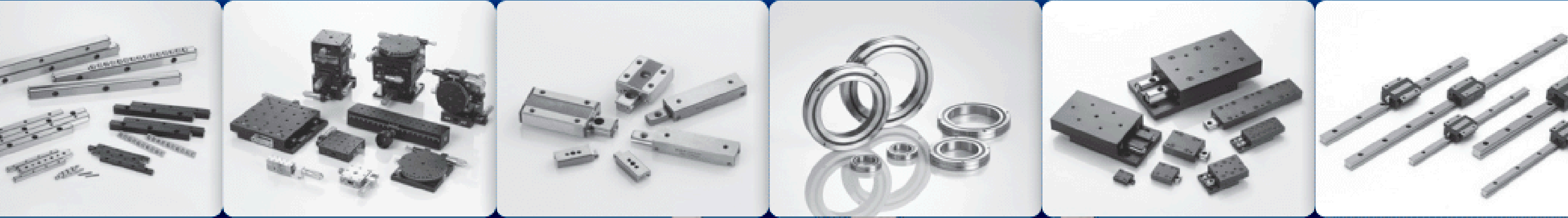


# BSQ

Big Success Quality



## Product Line-Up

*Linear Guide*

*Miniature Guide*

*Cross Roller Slide Guide*

*Cross Roller Slide Table*

*Goniometer Cross Roller Guide*

*Cross Roller Rotary Guide*

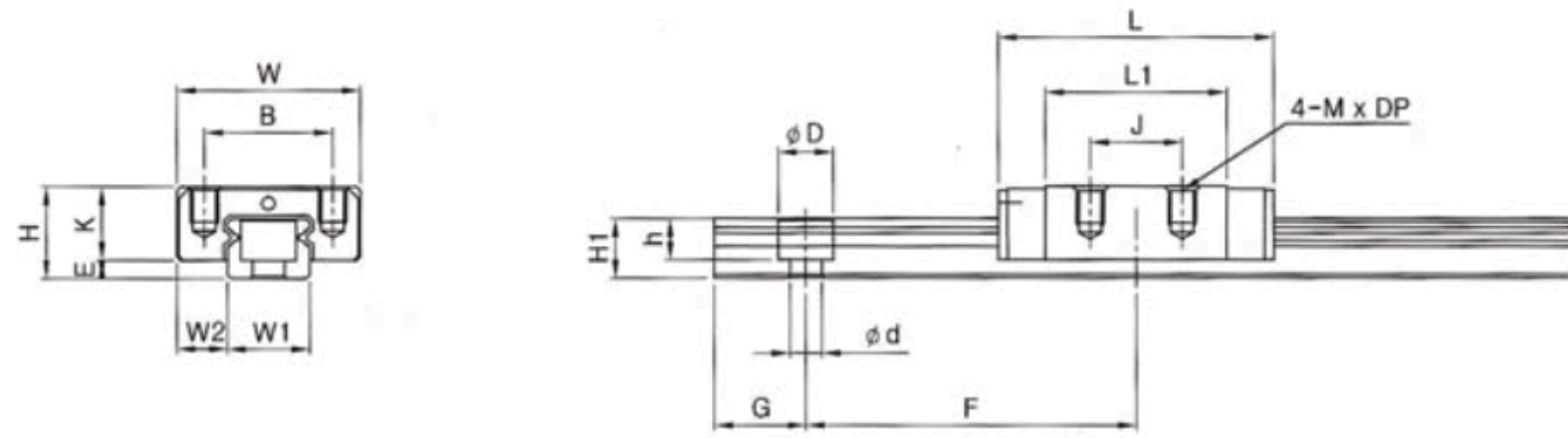
*Ball Slide*

*Support Unit*

*Manual Stage*

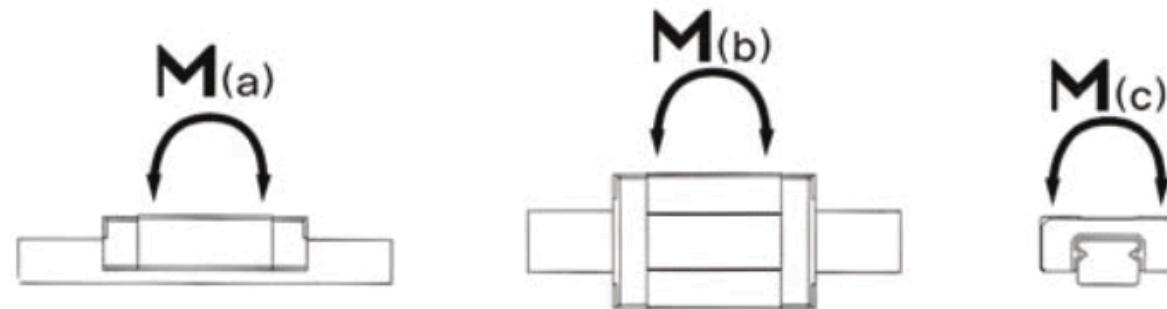
*Micrometer Head*





( Unit : mm )

Model Number	Dimensions of Assembly				Dimensions of Block							Dimensions of Rail							
	H	W	L	E	B	J	M	DP	L1	K	W1	W2	H1	F	d	D	h	G	Max L0
MCM5	6	12	16.4	1.5	8		M2	1.5	10	4.5	5	3.5	3.7	15	2.4	3.5	0.8	5	200
MCMW5	6.5	17	20.5	1.5	13		M2.5	1.5	14	5	10	3.5	4	20	2.9	4.8	1.6	5	200
MCM7	8	17	24.8	1.5	12	8	M2	3	15	6.5	7	5	4.7	15	2.4	4.2	2.4	5	600
MCM7L	8	17	32.8	1.5	12	13	M2	3	23	6.5	7	5	4.7	15	2.4	4.2	2.4	5	600
MCMW7	9	25	31.2	2	19	10	M3	3	21	7	14	5.5	5.2	30	3.5	6	3.2	10	1000
MCM9	10	20	29.8	2	15	10	M3	4	19.5	8	9	5.5	6.5	20	3.5	6	3.5	7.5	1000
MCM9L	10	20	40.6	2	15	16	M3	4	30	8	9	5.5	6.5	20	3.5	6	3.5	7.5	1000
MCMW9	12	30	40.2	3	21	12	M3	4	27.5	9	18	6	7.5	30	3.5	6	4.5	10	1000
MCMW9L	12	30	51.5	3	23	24	M3	4	38.6	9	18	6	7.5	30	3.5	6	4.5	10	1000
MCM12	13	27	35	3	20	15	M3	4	21.5	10	12	7.5	8	25	3.5	6	4.5	10	1000
MCM12L	13	27	46.9	3	20	20	M3	4	33.2	10	12	7.5	8	25	3.5	6	4.5	10	1000
MCMW12	14	40	47	3.5	28	15	M3	4	31.4	10.5	24	8	8.5	40	4.5	8	4.5	15	1000
MCMW12L	14	40	61.7	3.5	28	28	M3	4	45.8	10.5	24	8	8.5	40	4.5	8	4.5	15	1000
MCM15	16	32	43	4	25	20	M3	5	26.7	12	15	8.5	10	40	3.5	6	4.5	15	1000
MCM15L	16	32	60	4	25	25	M3	5	43.4	12	15	8.5	10	40	3.5	6	4.5	15	1000
MCMW15	16	60	55.8	3.5	45	20	M4	5	38	12.5	42	9	9.5	40	4.5	8	4.5	15	1000
MCMW15L	16	60	74.8	3.5	45	35	M4	5	57	12.5	42	9	9.5	40	4.5	8	4.5	15	1000



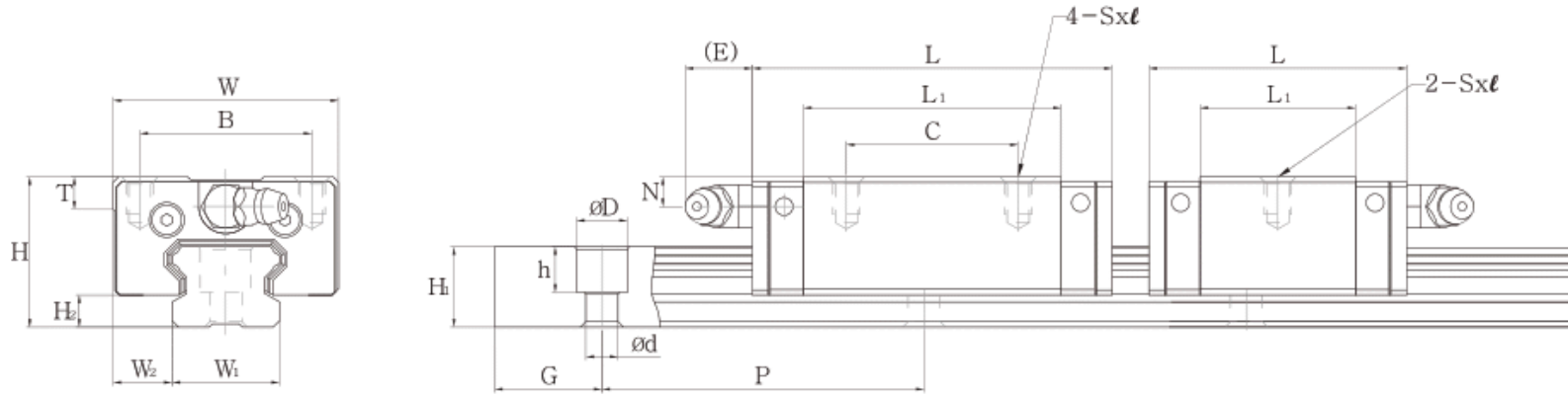
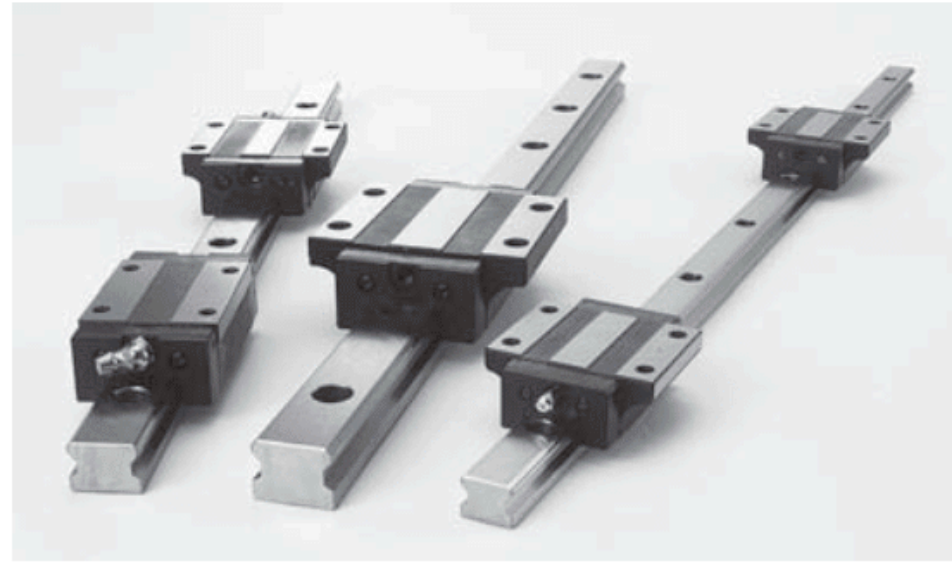
( Unit : mm )

Model Number	Basic Load Rating		Static Rated Moment ( N · m )			Weight	
	C kN	C0 kN	M(a)	M(b)	M(c)	Block kg	Rail kg
MCM5	0.32	0.58	0.88	0.88	1.5	0.003	0.14
MCMW5	0.5	0.95	1.95	1.95	4.9	0.007	0.28
MCM7	0.88	1.37	2.93	2.93	5	0.013	0.23
MCM7L	1.59	2.5	8.68	8.68	9.12	0.018	0.23
MCMW7	1.37	2.16	7.02	7.02	15.4	0.021	0.51
MCM9	1.47	2.25	7.34	7.34	10.4	0.018	0.32
MCM9L	2.6	3.96	18.4	18.4	18.4	0.027	0.32
MCMW9	2.44	3.92	16	16	36	0.035	1.08
MCMW9L	3.52	5.37	31	31	49.4	0.05	1.08
MCM12	2.65	4.02	11.4	10.1	19.2	0.037	0.58
MCM12L	4.3	6.65	28.9	25.5	31.8	0.055	0.58
MCMW12	4.02	6.08	24.5	21.7	59.4	0.074	1.5
MCMW12L	5.96	9.21	53.9	47.3	90.1	0.101	1.5
MCM15	4.41	6.57	23.7	21.1	38.8	0.069	0.93
MCM15L	7.16	10.7	63.1	55.6	63	0.093	0.93
MCMW15	6.65	9.8	50.3	44.4	167	0.17	3
MCMW15L	9.9	14.9	110	97.2	255	0.2	3

**A**

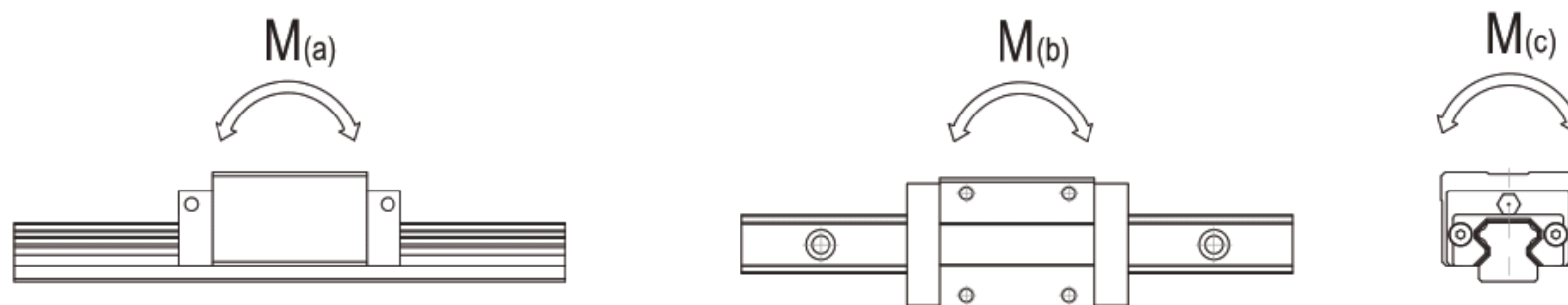
Linear Guide

**MCS-N**  
**MCS-SN**



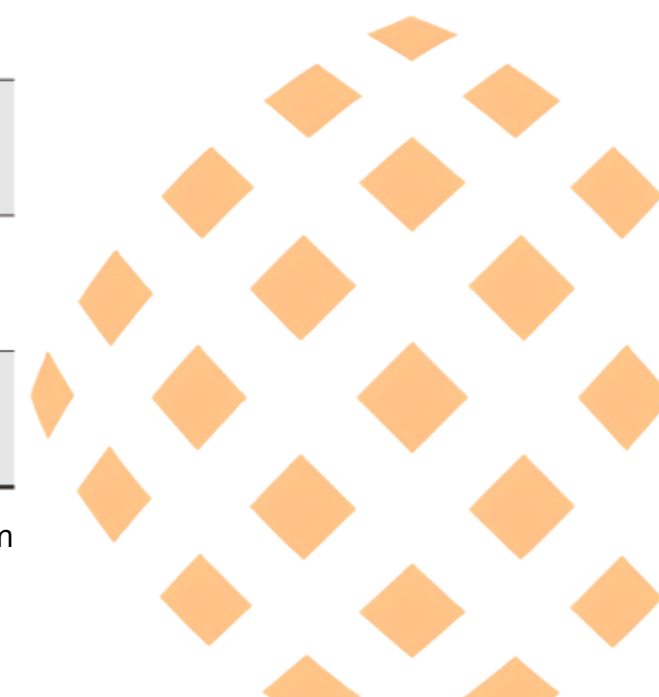
(Unit : mm)

Model Number	Dimensions Of Assembly					Dimensions Of Block								Dimensions Of Rail				
	H	W	L	W <sub>2</sub>	H <sub>2</sub>	B	C	S x ℓ	L <sub>1</sub>	T	N	E	Grease Nipple	W <sub>1</sub>	H <sub>1</sub>	P	G	D x h X d
MCS 15 SN	24	34	40	9.5	4.5	26	-	M4x6	23.5	6	5.5	5.5	G-M4	15	12.5	60	20	7.5x5.5x4.5
MCS 15 N			57				26		40.5									
MCS 20 SN	28	42	48	11	6	32	-	M5x7	29	6	55	12	G-M6	20	15	60	20	9.5x8.5x6
MCS 20 N			67				32		48									
MCS 25 SN	33	48	60.2	12.5	7	35	-	M6x9	38.7	8	6	12	G-M6	23	18	60	20	11x9x7
MCS 25 N			82				35		60.5									
MCS 30 SN	42	60	68	16	9.5	40	-	M8x12	43.3	8	8	12	G-M6	28	23	80	20	11x9x7
MCS 30 N			96.7				40		72									
MCS 35 SN	48	70	78	18	9.5	50	-	M8x12	46	12.5	8.5	12	G-M6	34	27.5	80	20	14x12x9
MCS 35 N			112				50		80									

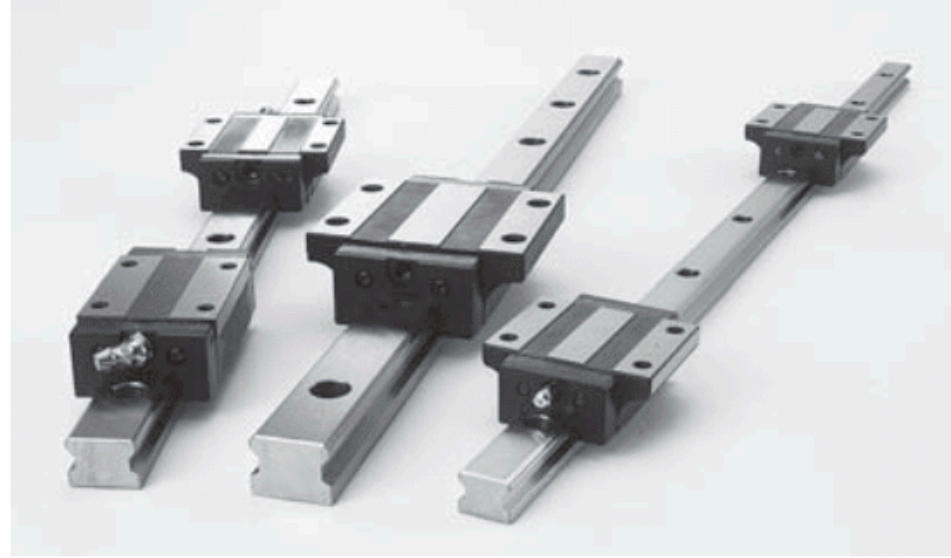


(Unit : mm)

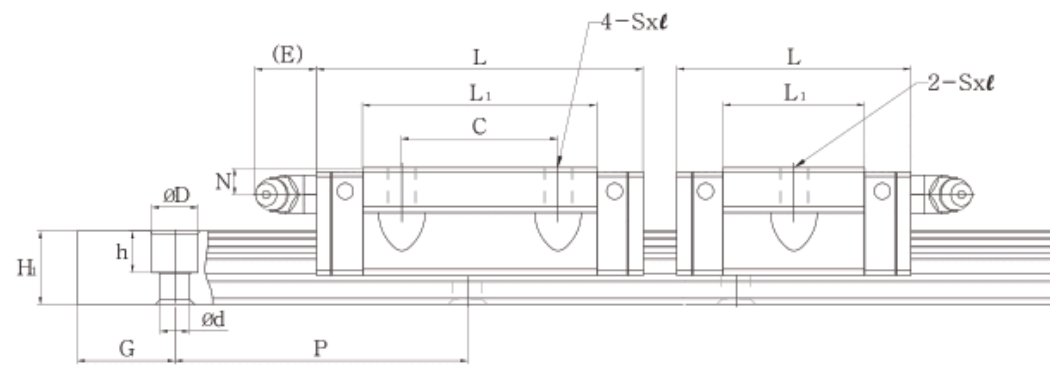
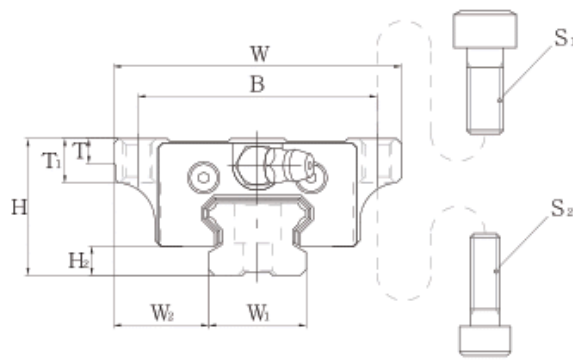
Model Number	Basic Load Rating		Static Rated Moment ( kN·m )					Weight	
	C kN	C0 kN	M(a)		M(b)		M(c)	Block kg	Rail kg/m
			1Block	2Block	1Block	2Block			
MCS 15 SN	6.7	9.6	0.04	0.25	0.03	0.24	0.07	0.09	1.2
MCS 15 N	10	16.8	0.10	0.56	0.08	0.56	0.12	0.16	
MCS 20 SN	9.8	14.2	0.07	0.42	0.06	0.38	0.14	0.16	2
MCS 20 N	13.8	23.5	0.17	0.95	0.16	0.94	0.23	0.26	
MCS 25 SN	15.6	22.2	0.13	0.88	0.10	0.87	0.25	0.29	3
MCS 25 N	22.4	36.8	0.33	1.78	0.32	1.78	0.41	0.45	
MCS 30 SN	23.2	31.8	0.21	1.22	0.18	1.28	0.42	0.52	4.4
MCS 30 N	32.8	53.2	0.58	3.10	0.55	3.04	0.73	0.82	
MCS 35 SN	35.6	44.1	0.29	2.34	0.32	2.62	0.70	0.82	6.2
MCS 35 N	52.1	75.6	0.80	5.16	0.88	5.24	1.25	0.13	



**A** **MCS-F**  
**MCS-SF**  
Linear Guide

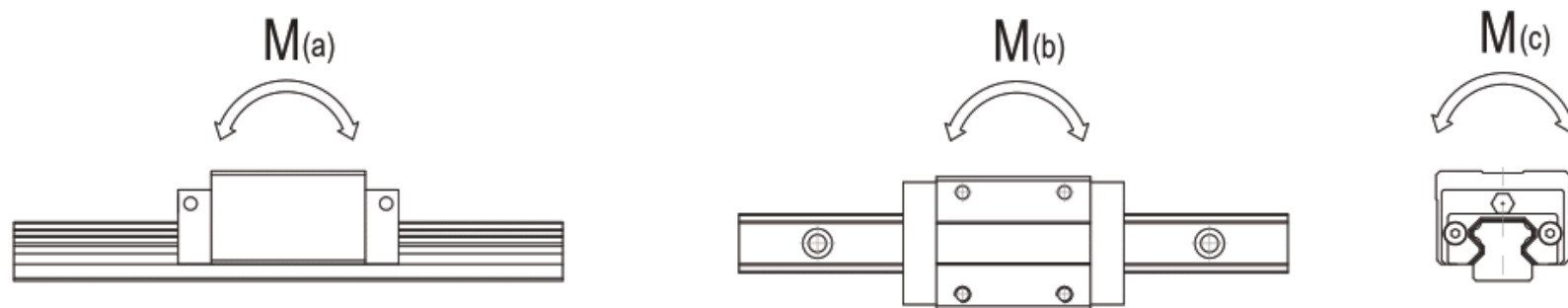


Model Number	Bolt Size	
	S <sub>1</sub>	S <sub>2</sub>
MCS 15	M5	M4
MCS 20	M6	M5
MCS 25	M8	M6



(Unit : mm)

Model Number	Dimensions Of Assembly					Dimensions Of Block										Dimensions Of Rail				
	H	W	L	W <sub>2</sub>	H <sub>2</sub>	B	C	S x ℓ	L <sub>1</sub>	T	T <sub>1</sub>	N	E	Grease Nipple	W <sub>1</sub>	H <sub>1</sub>	P	G	D x h X d	
MCS 15 SF	24	52	40	18.5	4.5	41	-	M5x7	23.5	5	7	5.5	5.5	G-M4	15	12.5	60	20	7.5x5.5x4.5	
MCS 15 F			57				26		40.5											
MCS 20 SF	28	59	48	19.5	6	49	-	M6x9	29	5	9	5.5	12	G-M6	20	15	60	20	9.5x8.5x6	
MCS 20 F			67				32		48											
MCS 25 SF	33	73	60.2	25	7	60	-	M8x10	38.7	7	10	6	12	G-M6	23	18	60	20	11x9x7	
MCS 25 F			82				35		60.5											
MCS 30 SF	42	90	68	31	9.5	72	-	M10x10	43.3	7	10	8	12	G-M6	28	23	80	20	11x9x7	
MCS 30 F			96.7				40		72											
MCS 35 SF	48	100	78	33	9.5	82	-	M10x13	46	9	13	8.5	12	G-M6	34	27.5	80	20	14x12x9	
MCS 35 F			112				50		80											

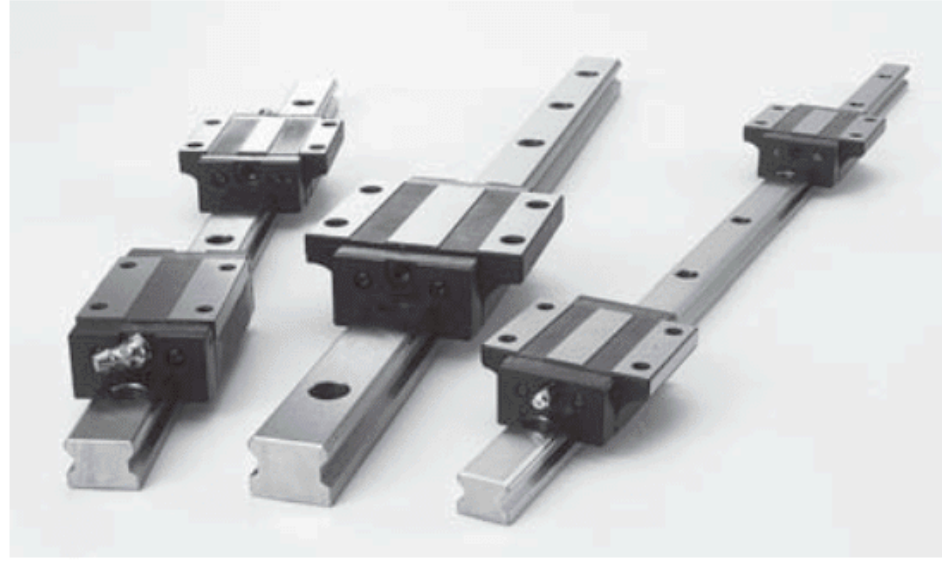


(Unit : mm)

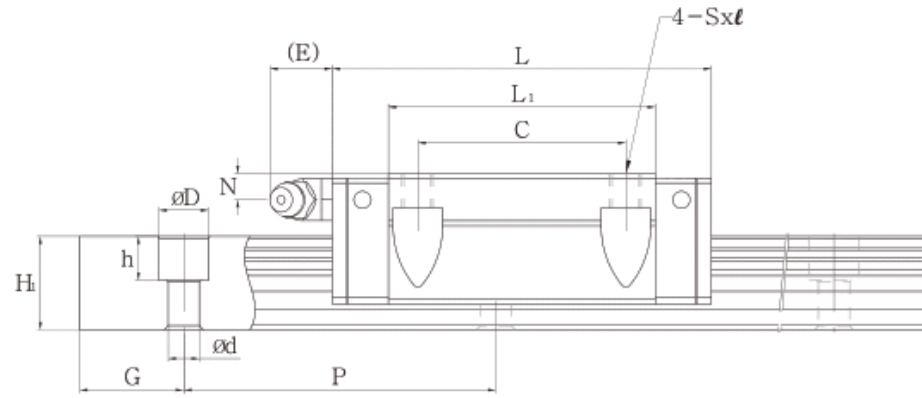
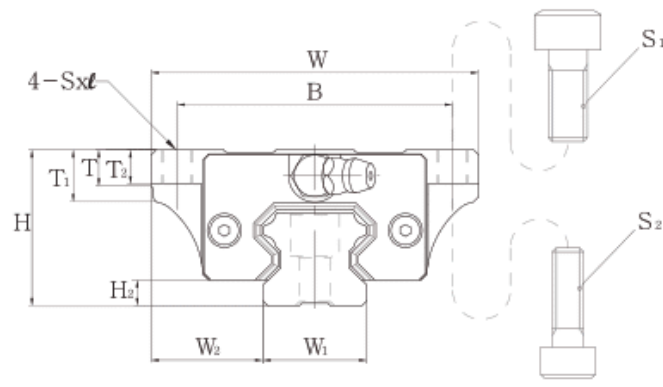
Model Number	Basic Load Rating		Static Rated Moment ( kN·m )					Weight	
	C kN	C0 kN	M(a)		M(b)		M(c)	Block kg	Rail kg/m
			1Block	2Block	1Block	2Block			
MCH 15 N	11.8	18.9	0.11	0.58	0.11	0.58	0.12	0.18	1.5
MCH 20 N	19.2	29.5	0.23	1.40	0.23	1.40	0.29	0.3	2.4
MCH 20 LN	23.3	39.3	0.38	2.16	0.38	2.16	0.38	0.39	
MCH 25 N	28.1	42.4	0.39	2.12	0.39	2.12	0.48	0.52	3.4
MCH 25 LN	34.4	56.6	0.65	3.50	0.65	3.50	0.63	0.68	
MCH 30 N	39.2	57.8	0.62	3.65	0.62	3.65	0.76	0.86	4.8
MCH 30 LN	47.9	77.0	10.50	5.78	10.50	5.78	1.05	1.12	
MCH 35 N	52.0	75.5	0.91	5.45	0.91	5.45	1.25	1.46	6.6
MCH 35 LN	63.6	100.6	1.58	8.48	1.58	8.48	1.67	1.9	



# MCH-F MCH-LF

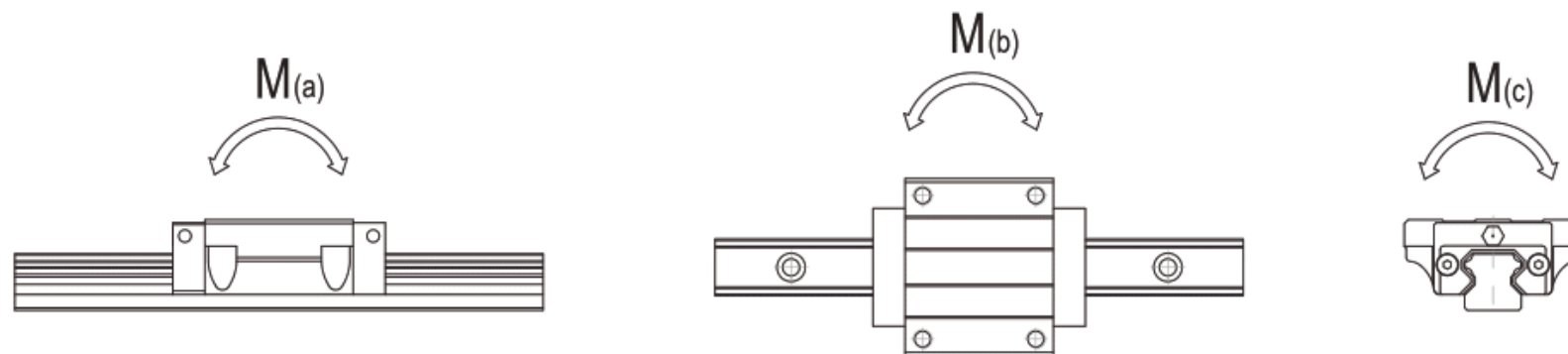


Model Number	Bolt Size	
	S <sub>1</sub>	S <sub>2</sub>
MCH 15	M5	M4
MCH 20	M6	M5
MCH 25	M8	M6



(Unit : mm)

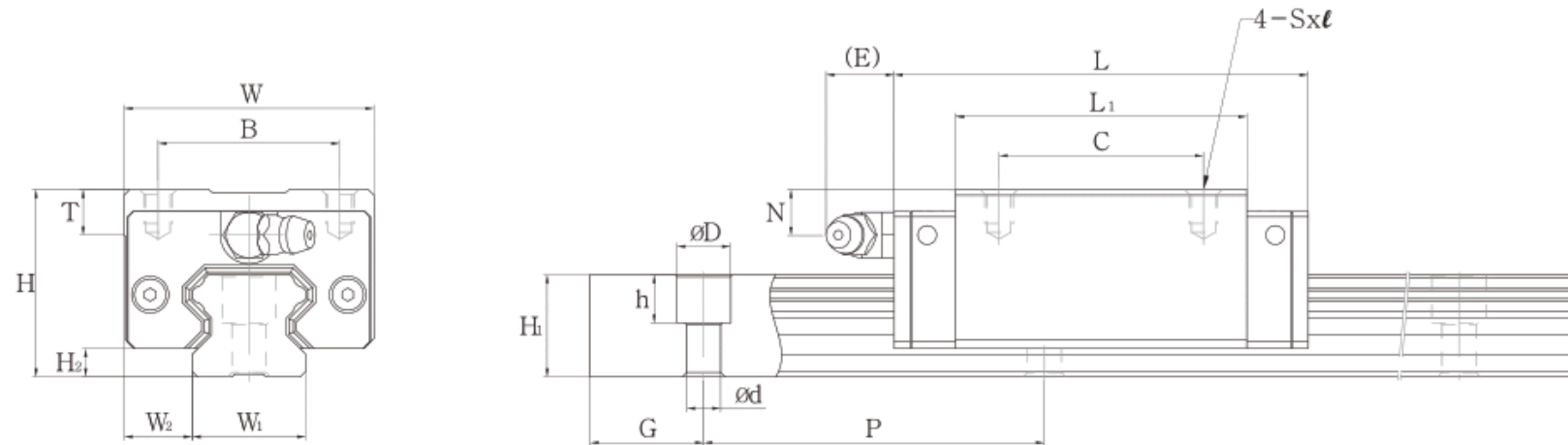
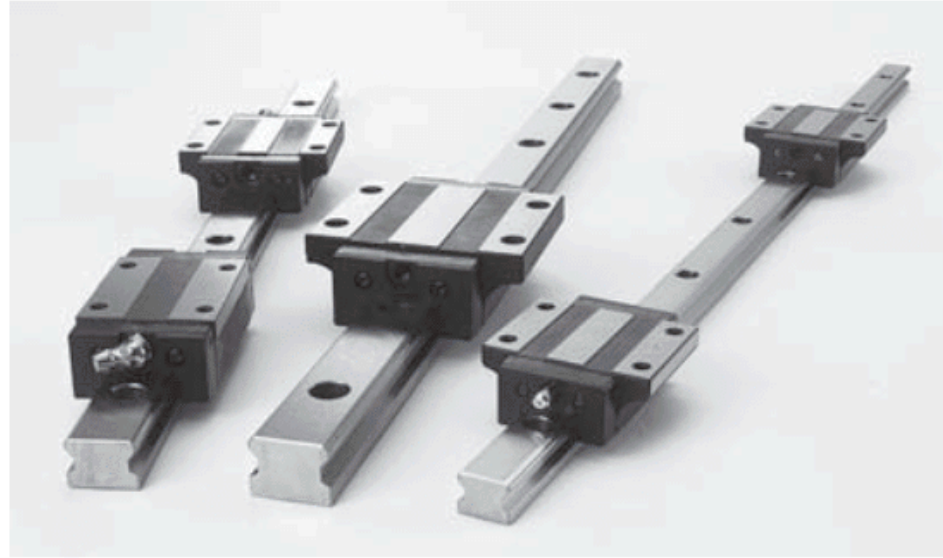
Model Number	Dimensions Of Assembly					Dimensions Of Block										Dimensions Of Rail				
	H	W	L	W <sub>2</sub>	H <sub>2</sub>	B	C	S x ℓ	L <sub>1</sub>	T	T <sub>1</sub>	T <sub>2</sub>	N	E	Grease Nipple	W <sub>1</sub>	H <sub>1</sub>	P	G	D x h X d
MCH 15 F	24	47	56.3	16	4.1	38	30	M5x7	39.3	7	11	7	4.3	7	G-M4	15	15	60	20	7.5x5.3x4.5
MCH 20 F	30	63	72.9	21.5	4.9	53	40	M6x10	51.3	7	10	10	5	12	G-M6	20	18	60	20	9.5x8.5x6
MCH 20 LF			88.8						67.2											
MCH 25 F	36	70	81.6	23.5	6.4	57	45	M8x10	59	11	16	10	6	12	G-M6	23	22	60	20	11x9x7
MCH 25 LF			100.6						78											
MCH 30 F	42	90	97	31	8	72	52	M10x10	71.4	11	18	10	7	12	G-M6	28	26	80	20	14x12x9
MCH 30 LF			119.2						93.6											
MCH 35 F	48	100	111.2	33	9.5	82	62	M10x13	81	13	21	13	8	12	G-M6	34	29	80	20	14x12x9
MCH 35 LF			136.6						106.4											



(Unit : mm)

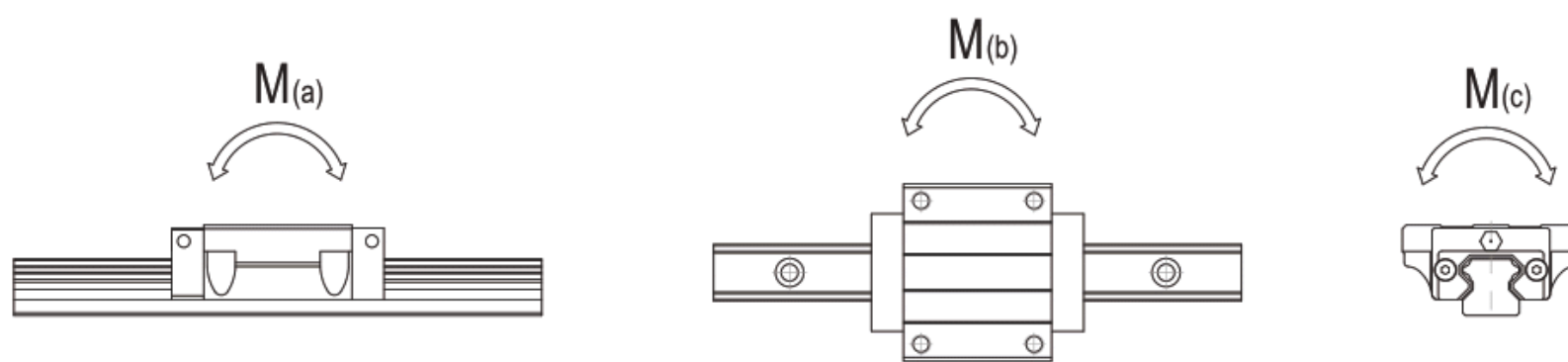
Model Number	Basic Load Rating		Static Rated Moment ( kN·m )					Weight	
	C kN	C0 kN	M(a)		M(b)		M(c)	Block kg	Rail kg/m
			1Block	2Block	1Block	2Block			
MCH 15 F	11.8	18.9	0.11	0.58	0.11	0.58	0.12	0.18	1.5
MCH 20 F	19.2	29.5	0.23	1.40	0.23	1.40	0.29	0.3	2.4
MCH 20 LF	23.3	39.3	0.38	2.16	0.38	2.16	0.38	0.39	
MCH 25 F	28.1	42.4	0.39	2.12	0.39	2.12	0.48	0.52	3.4
MCH 25 LF	34.4	56.6	0.65	3.50	0.65	3.50	0.63	0.68	
MCH 30 F	39.2	57.8	0.62	3.65	0.62	3.65	0.76	0.86	4.8
MCH 30 LF	47.9	77.0	10.50	5.78	10.50	5.78	1.05	1.12	
MCH 35 F	52.0	75.5	0.91	5.45	0.91	5.45	1.25	1.46	6.6
MCH 35 LF	63.6	100.6	1.58	8.48	1.58	8.48	1.67	1.9	

**A**  
**MCH-N**  
**MCH-LN**  
Linear Guide



(Unit : mm)

Model Number	Dimensions Of Assembly					Dimensions Of Block								Dimensions Of Rail				
	H	W	L	W <sub>2</sub>	H <sub>2</sub>	B	C	S x ℓ	L <sub>1</sub>	T	N	E	Grease Nipple	W <sub>1</sub>	H <sub>1</sub>	P	G	D x h X d
MCH 15 N	28	34	56.3	9.5	4.1	26	26	M4x5	39.3	7.2	8.3	7	G-M4	15	15	60	20	7.5x5.3x4.5
MCH 20 N	30	44	72.9	12	4.9	32	36	M5x6	51.3	8	5	12	G-M6	20	18	60	20	9.5x8.5x6
MCH 20 LN			88.8				50		67.2									
MCH 25 N	40	48	81.6	12.5	6.4	35	35	M6x8	59	10	10	12	G-M6	23	22	60	20	11x9x7
MCH 25 LN			100.6				50		78									
MCH 30 N	45	60	97	16	8	40	40	M8x10	71.4	11.7	10	12	G-M6	28	26	80	20	14x12x9
MCH 30 LN			119.2				60		93.6									
MCH 35 N	55	70	111.2	18	9.5	50	50	M8x12	81	12.7	15	12	G-M6	34	29	80	20	14x12x9
MCH 35 LN			136.6				72		106.4									



(Unit : mm)

Model Number	Basic Load Rating		Static Rated Moment ( kN·m )					Weight	
	C kN	C0 kN	M(a)		M(b)		M(c)	Block kg	Rail kg/m
			1Block	2Block	1Block	2Block			
MCS 15 SF	6.7	9.6	0.04	0.25	0.03	0.24	0.07	0.12	1.2
MCS 15 F	10	16.8	0.10	0.56	0.08	0.56	0.12	0.21	
MCS 20 SF	9.8	14.2	0.07	0.42	0.06	0.38	0.14	0.20	2
MCS 20 F	13.8	23.5	0.17	0.95	0.16	0.94	0.23	0.34	
MCS 25 SF	15.6	22.2	0.13	0.88	0.10	0.87	0.25	0.39	3
MCS 25 F	22.4	36.8	0.33	1.78	0.32	1.78	0.41	0.60	
MCS 30 SF	23.2	31.8	0.21	1.22	0.18	1.28	0.42	0.65	4.4
MCS 30 F	32.8	53.2	0.58	3.10	0.55	3.04	0.73	1.08	
MCS 35 SF	35.6	44.1	0.29	2.34	0.32	2.62	0.70	0.91	6.2
MCS 35 F	52.1	75.6	0.80	5.16	0.88	5.24	1.25	0.61	



## Contact us

☎ +6016-420-2524 / +6012-421-2524

✉ [jamotionresources@gmail.com](mailto:jamotionresources@gmail.com)

🌐 [www.jamotionresources.com](http://www.jamotionresources.com)



Visit our Website



Contact us in WhatsApp